



OKAY 72'ERS !  
OBVIOUSLY, WE ALL KNOW  
THAT SUBSPACE TRAVEL &  
COMMUNICATION IS CURRENTLY  
"CACTUS" , DUE TO THE  
BLACKOUT ! (AND, NO DEREK,  
WE ARE NOT REFERRING TO  
YOUR PERFORMANCE IN 10-  
FORWARD LAST NIGHT -  
SHAMEFUL AS IT MAY BE.....



IT'S A  
PHENOMINOMINANA  
FO' SHO' !

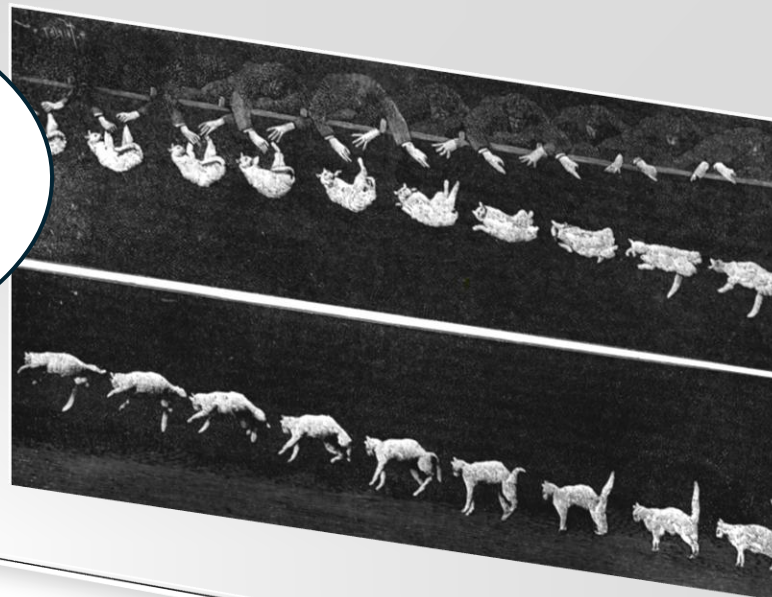
I'M  
SCARED  
!

WHAT'S  
FOR  
LUNCH?



AS LUCK WOULD HAVE IT,  
THOSE FRIGHTFULLY CLEVER  
BOFFINS AT STARFLEET CORPS  
OF ENGINEERING HAVE COME UP  
WITH AN ALTERNATE FORM OF  
SUBSPACE PROPULSION TO GET  
US OUT OF THIS JAM!

EVERYONE KNOWS CAT'S  
ALWAYS LAND ON THEIR PAWS,  
RIGHT?



OKAAAY  
?

WHAT  
THE  
HECK?



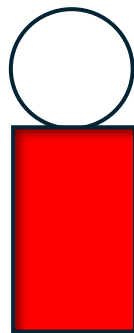


AND IT'S ALSO AN IMMUTABLE -  
LAW OF THE UNIVERSE THAT,  
WHEN DROPPED, TOAST  
INVARIABLY ALWAYS FALLS  
"BUTTER - SIDE - DOWN."....



I ACTUALLY WENT  
TO STARFLEET  
ACADEMY FOR 4  
YEARS, HOW IS  
THIS RELEVANT?

LOGICAL

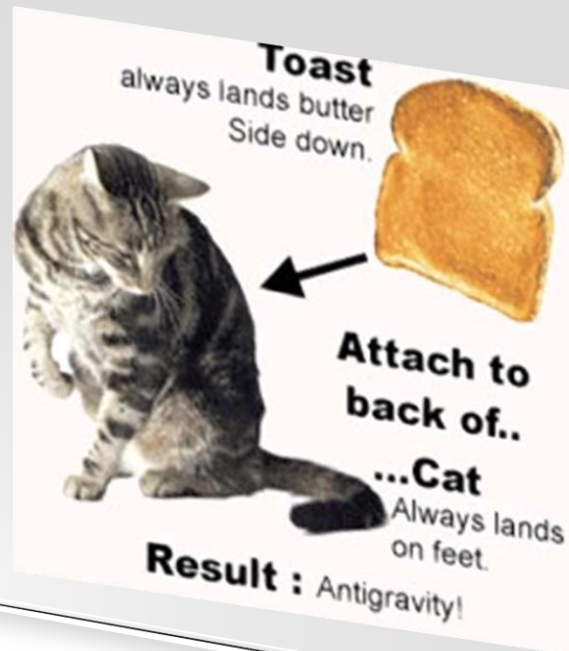




DURING TOP SECRET  
STARFLEET EXPERIMENTS TO  
USE THIS PHENOMENA TO  
CREATE A STABLE ORGANIC -  
BASED ANTIGRAVITY DEVICE, AN  
UNEXPECTED LAB - EXPERIMENT  
GONE WRONG YIELDED  
UNEXPECTED, BUT EXCITING  
RESULTS.....

THEY'LL GIVE A  
RESEARCH GRANT FOR  
ABSOLUTELY BLOODY  
ANYTHING THESE DAYS,  
WON'T THEY?

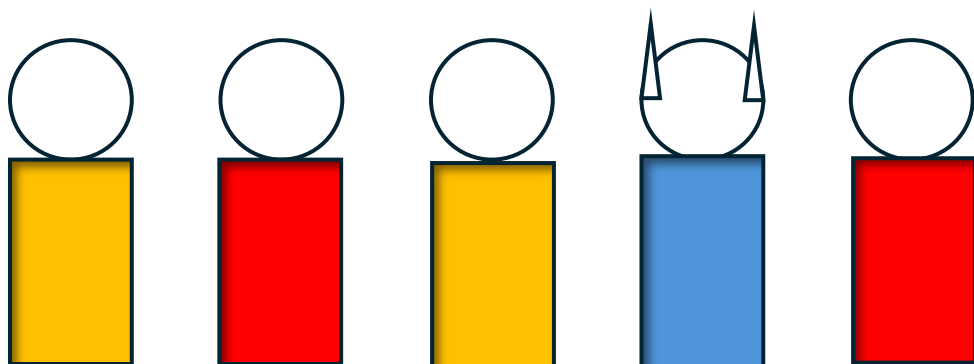
....





THE TEST - CAT IN QUESTION  
GOT A LITTLE PECKISH AND  
SOMEHOW ATE THE TOAST -  
THE RESULTANT CONVERGENCE  
OF TWO IMMUTABLE LAWS OF  
THE UNIVERSE CAUSING THE CAT  
TO TURN INSIDE OUT AND FORM  
A WORMHOLE!

LADIES & GENTLEMEN - I GIVE  
YOU "THE WAY HOME!"







NEAT HUH?  
EH? EH?



THAT'S  
IT, I  
QUIT.....

