

MAIN OPS

TO SUBSPACE
COMM

5.47

AUDIO - DISABLED

STATUS: READY

CLASSIFIED PRESENTATION
ACCESS RESTRICTED TO FOURTH FLEET COMMAND
DAYSTROM INSTITUTE EXPERIMENTAL DRIVE TEAM

ANALYSIS

MINDSTREAM DRIVE PROTOTYPE

N.S.C.

THE MINDSTREAM PROPULSION DRIVE REPRESENTS A RADICAL DEPARTURE FROM CONVENTIONAL MATTER-BASED PROPULSION SYSTEMS. DRAWING FROM ABILITIES OF THE TRAVELER CLASS OF ENTITIES, THE DRIVE ALLOWS FOR NEAR INSTANTANEOUS DISPLACEMENT ACROSS SPACETIME

HOLODECK PROGRAMS

THE BIG GOODBYE
ELEMENTARY, DEAR DATA
BOBBY TRAP
SHIP IN A BOTTLE
A FISTFUL OF DATAS
EMERGENCE
IDENTITY CRISIS

PADD TYPE 2500

■■■■■

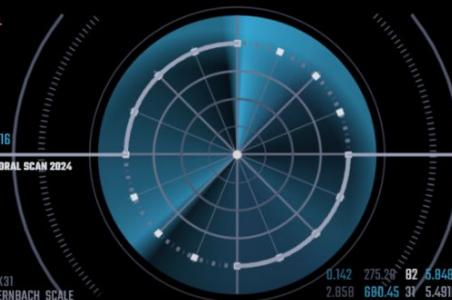
LEVEL

9.98116

TEMPORAL SCAN 2024

74X31

- STERNBACH SCALE



PASSIVE

GRAV.
WAVE
DETECTOR

LIGHT WIRE KADA

ARGUS ARRAY

DATA - C 10 15 2

SUBSPACE COMM

TO MAIN OPS

S.47

AUDIO - DISABLED

STATUS: COMM

MILKY WAY GALAXY
ORION ARM

ALPHA QUADRANT
SECTOR 001
SOLAR SYSTEM

DISTANCE TO
GALACTIC CENTER
25,800 LY

RELAY STATION 47
4.2 GIGAWATTS

N.S.C.



SPACE and **TIME** are not fixed constants, but reactive matrices responsive to consciousness. The **MINDSTREAM DRIVE** bypasses physical traversal by "re-locating" the vessel's subjective spatial coordinates through mental resonance, harmonized across a Consciousness Matrix.

$\Psi \Sigma(f_e) \propto \Delta \tau(x, y, z)$ – where Ψ is the collective mental waveform, $\Sigma(f_e)$ is the emotional harmonic sum, and $\Delta \tau$ is the perceived spacetime interval compression.

Rather than moving the ship from A to B, the MPS alters the *ship's relationship to space*, such that A becomes B within a harmonized mental field.

TAU ALPHA C

EARTH

48632.4
50893.5
52200.0
56844.8
48632.4
50893.5
52200.0
56844.8
48632.4
50893.5
52200.0

CHANNEL
FREQUENCIES

SUBSPACE COMM

TO MAIN OPS

S.47 AUDIO - DISABLED

STATUS: COMM

MILKY WAY GALAXY
ORION ARM

ALPHA QUADRANT
SECTOR 001
SOLAR SYSTEM

DISTANCE TO
GALACTIC CENTER
25,800 LY

RELAY STATION 47
4.2 GIGAWATTS

N.S.C.

TRAVELER CORE

A stabilized subdimensional lattice of chronometric crystals sourced from phase-altered realities. Acts as a metaphysical transducer, converting focused thought into field displacement energy. Requires periodic harmonization to avoid cognitive bleed.

CONSCIOUSNESS MATRIX

A neural web linking all onboard minds into a single psionic waveform. Utilizes a low-level empathic feedback loop to balance out chaotic fluctuations. Interfaces with ship's AI for mood monitoring and waveform stability prediction.

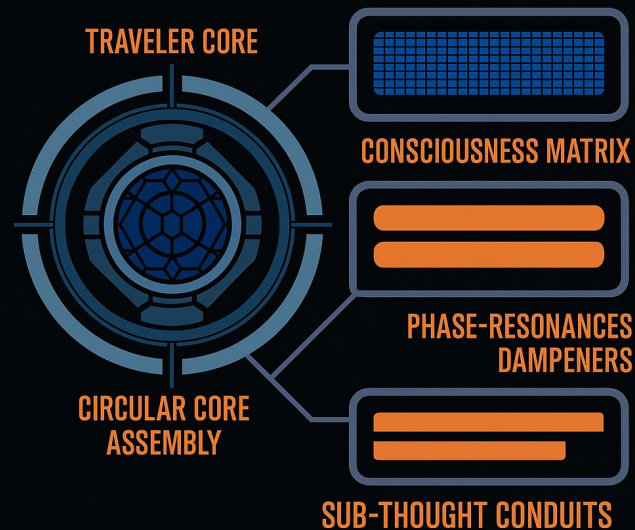
SUB-THOUGHT CONDUITS

Specialized psychotronic circuits guiding emotional resonance into the Traveler Core. Encoded with archetypal pathways (heroism, unity, curiosity) to reduce discordant thought interference.

PHASE-RESONANCE DAMPENERS

Contain excess thought-energy buildup that might otherwise fracture internal time perception. Prevent hallucinations, echo doubles, and timeline bleeding.

MINDSTREAM DRIVE SYSTEM

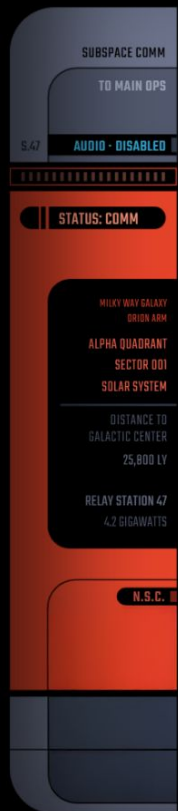


TAU ALPHA C

EARTH

48632.4
50893.5
52200.0
56844.8
48632.4
50893.5
52200.0
56844.8
48632.4
50893.5
52200.0

CHANNEL
FREQUENCIES



OPERATIONAL PARAMETERS

Minimum Crew Mental Coherence (CMC):
93.4%

Conscious Harmonic Range: **3.2 – 8.7 Hz (Psi-band)**

Navigator Requirement: **Level-9 Empath or Traveler-Class Entity**

Cooldown Cycle: **6 subjective hours per Mindstream Jump**

Maximum Theoretical Range: **Unlimited (limited only by imaginative constraint)**

KNOWN RISKS

Emotional Instability: Internal crew conflict can cause misalignment, leading to false arrival points, emotional looping environments, or subjective time traps.

Phase Echoes: Duplicate crew members from overlapping intention layers have been recorded. Standard Starfleet containment protocol now includes recursive identity checks.

Spatial Misimagining: Unclear or chaotic visualization during jump can result in fragmentary arrivals, uninhabitable destination geometries, or metaphoric reality zones.

TAU ALPHA C

EARTH

4B632.4
50893.5
52200.0
56844.9
4B632.4
50893.5
52200.0
56844.9
4B632.4
50893.5
52200.0

CHANNEL
FREQUENCIES



SUBSPACE COMM

TO MAIN OPS

S.47 AUDIO - DISABLED

STATUS: COMM

MILKY WAY GALAXY
ORION ARM

ALPHA QUADRANT
SECTOR 001
SOLAR SYSTEM

DISTANCE TO
GALACTIC CENTER
25,800 LY

RELAY STATION 47
4.2 GIGAWATTS

N.S.C.

SECURITY MEASURES

All equipped vessels carry **TEMPORARY MEDITATION INHIBITORS (TMI)** to shut down neural flow in case of instability.

Crew are issued mandatory **EMOTION FILTERS** for synchronized mood regulation.

Computer subroutines monitor for unauthorized thought-pattern modulations.



TAU ALPHA C

EARTH

48632.4
50893.5
52200.0
56844.8
48632.4
50893.5
52200.0
56844.8
48632.4
50893.5
52200.0

CHANNEL
FREQUENCIES

SUBSPACE COMM

TO MAIN OPS

S.47

AUDIO - DISABLED

STATUS: COMM

MILKY WAY GALAXY
ORION ARM

ALPHA QUADRANT
SECTOR 001
SOLAR SYSTEM

DISTANCE TO
GALACTIC CENTER
25,800 LY

RELAY STATION 47
4.2 GIGAWATTS

N.S.C.



IMPACT

Obsolete warp and transwarp propulsion

Eliminate fuel dependency

Reshape Starfleet logistics, exploration,
and diplomacy

Render galactic travel a matter of vision
rather than distance

TAU ALPHA C

EARTH

48632.4
50893.5
52200.0
56844.9
48632.4
50893.5
52200.0
56844.9
48632.4
50893.5
52200.0

CHANNEL
FREQUENCIES